

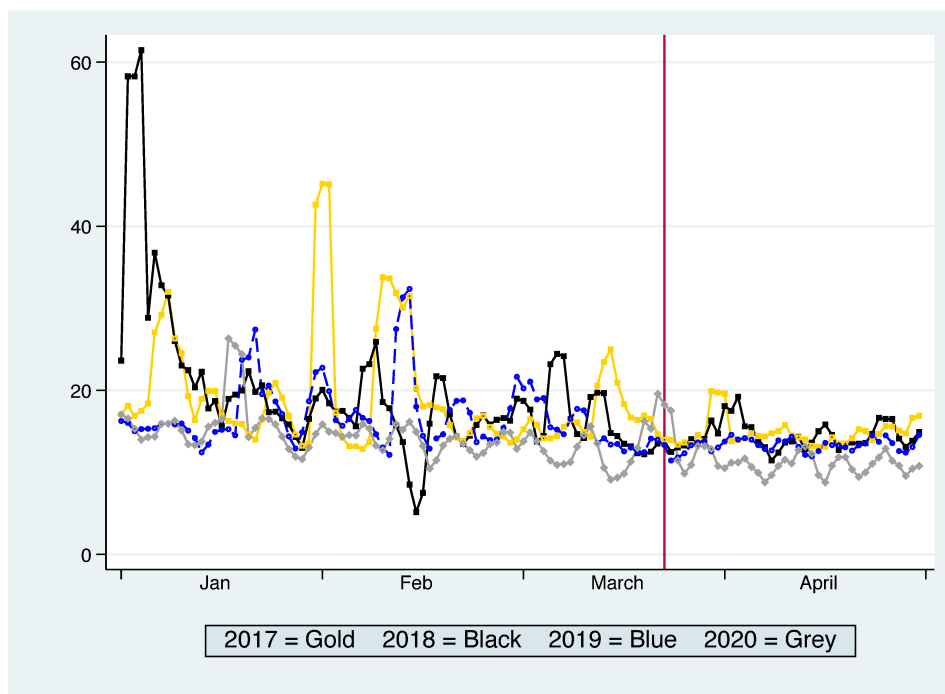
Supplemental Material

Table S1. Impact of COVID-19 on Motor Vehicle Crashes Stratified by Number of Vehicles Included in Crash, Sensitivity Analysis for Stay-at-Home order in 2020

Outcome Models	Incidence Rate Ratio (IRR)	95% Confidence Interval (CI)	P-value
All Type Crashes	1.04	(0.86, 1.26)	0.64
Single Vehicle	2.09	(1.41, 3.09)	<0.01
Multiple Vehicle	0.84	(0.72, 0.97)	0.02
Any Injury Crash	1.00	(0.81, 1.25)	0.95
Single Vehicle	1.66	(1.16, 2.36)	<0.01
Multiple Vehicle	0.81	(0.66, 0.98)	0.03
Non-Injury Crash	1.05	(0.87, 1.27)	0.55
Single Vehicle	2.32	(1.50, 3.58)	<0.01
Multiple Vehicle	0.85	(0.73, 0.99)	0.03
Fatal Crash	1.28	(0.46, 3.52)	0.62
Single Vehicle	1.79	(0.50, 6.34)	0.37
Multiple Vehicle	0.78	(0.16, 3.79)	0.76

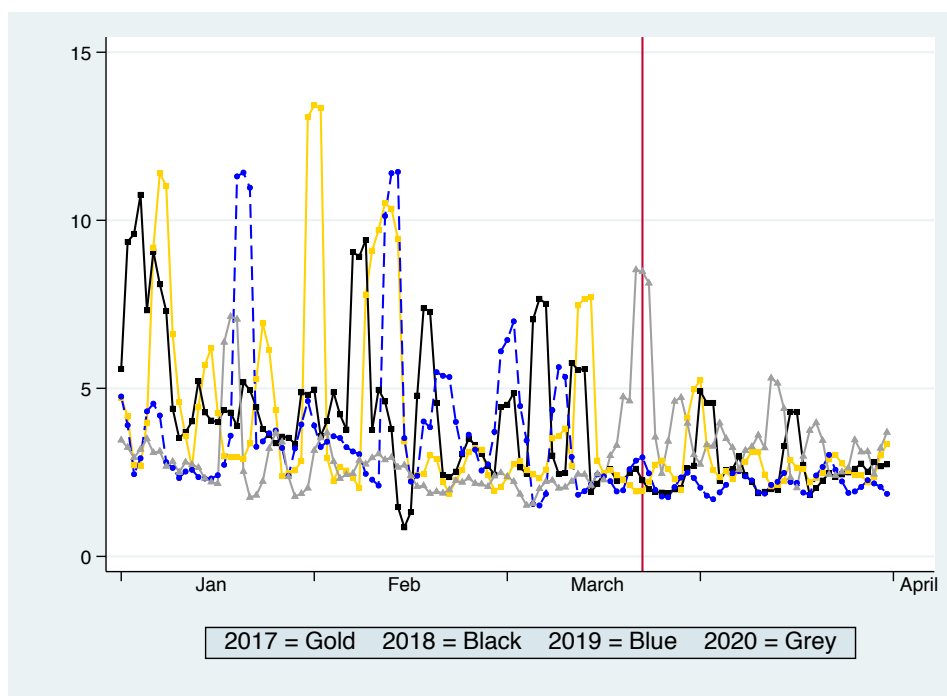
Model specified a Poisson distribution of the outcome with a log transformed VMT as population offset. Robust standard errors were specified for a more conservative estimate of coefficients. Model includes linear time, average daily precipitation and average daily highest recorded temperature. Model only includes data from 2020. Stay-at-home order starts on March 16th instead of the actual date March 23rd to test impact.

Figure S1. Daily Rates of All Type Crashes per 10 Million Vehicle Miles Traveled in Connecticut, 2020-2017



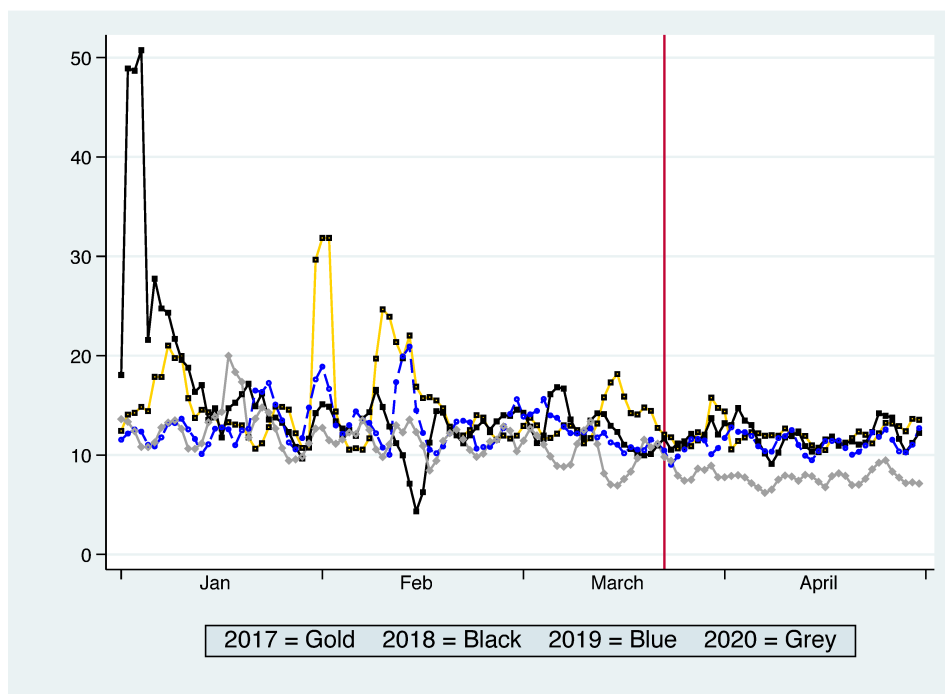
*Three-day Moving Average

Figure S2. Daily Rates of All Type Crashes, Single Vehicle per 10 Million Vehicle Miles Traveled in Connecticut, 2020-2017



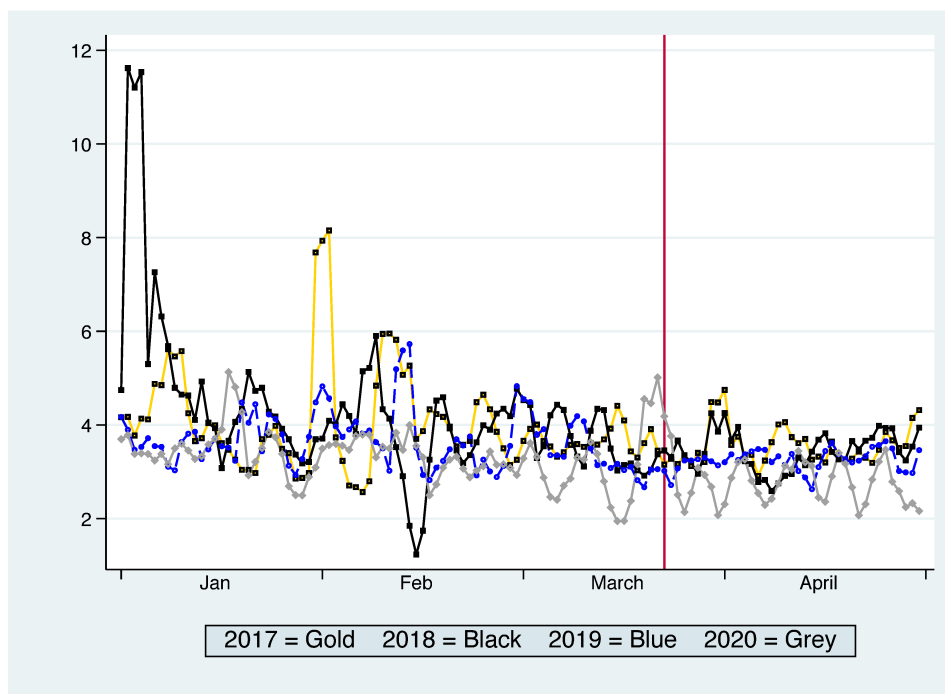
*Three-day Moving Average

Figure S3, Daily Rates of All Type Crashes, Multiple Car per 10 Million Vehicle Miles Traveled in Connecticut, 2020-2017



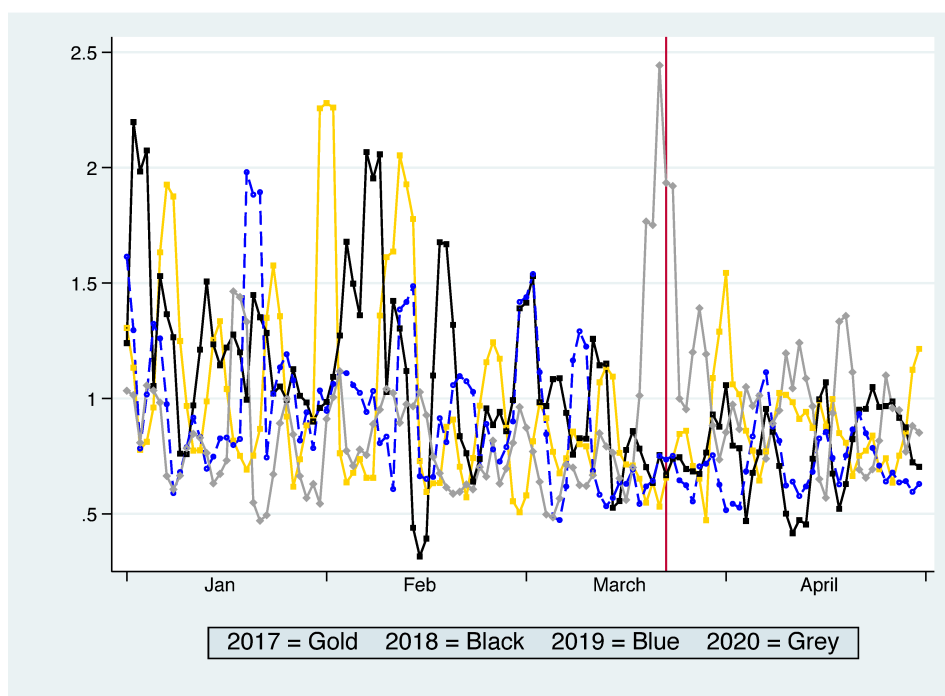
*Three-day Moving Average

Figure S4, Daily Rates of Any Injury Crashes per 10 Million Vehicle Miles Traveled in Connecticut, 2020-2017



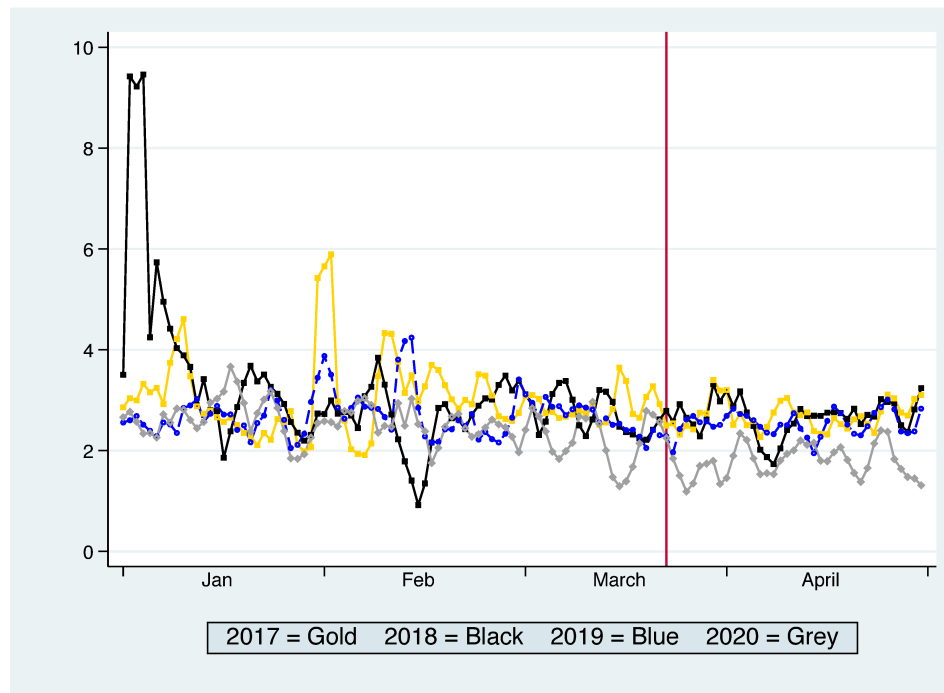
*Three-day Moving Average

Figure S5, Daily Rates of Any Injury Crashes, Single Vehicle per 10 Million Vehicle Miles Traveled in Connecticut, 2020-2017



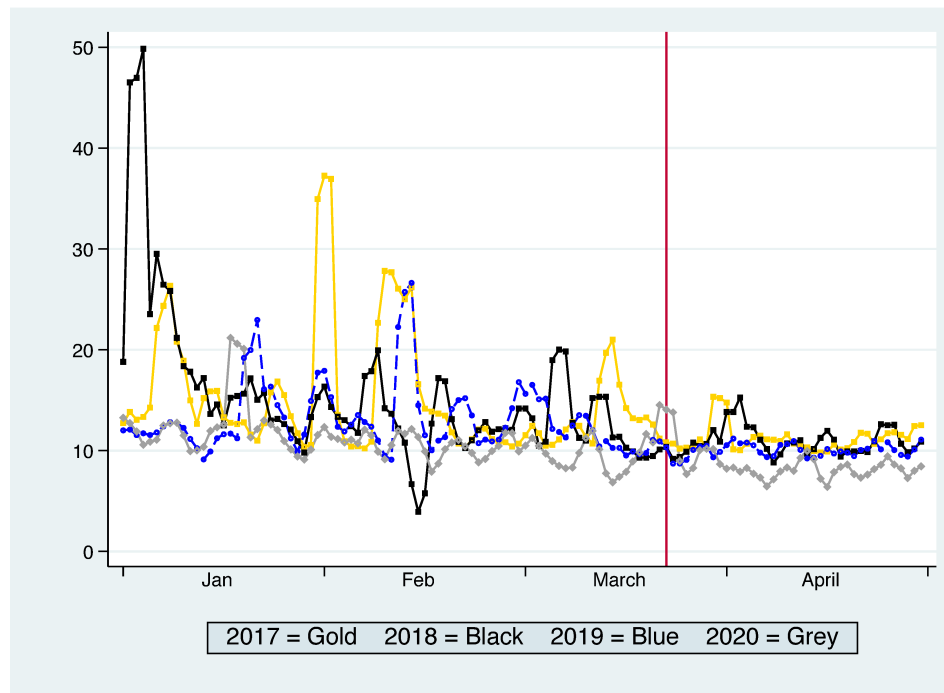
*Three-day Moving Average

Figure S6, Daily Rates of Any Injury Crashes, Multiple Vehicle per 10 Million Vehicle Miles Traveled in Connecticut, 2020-2017



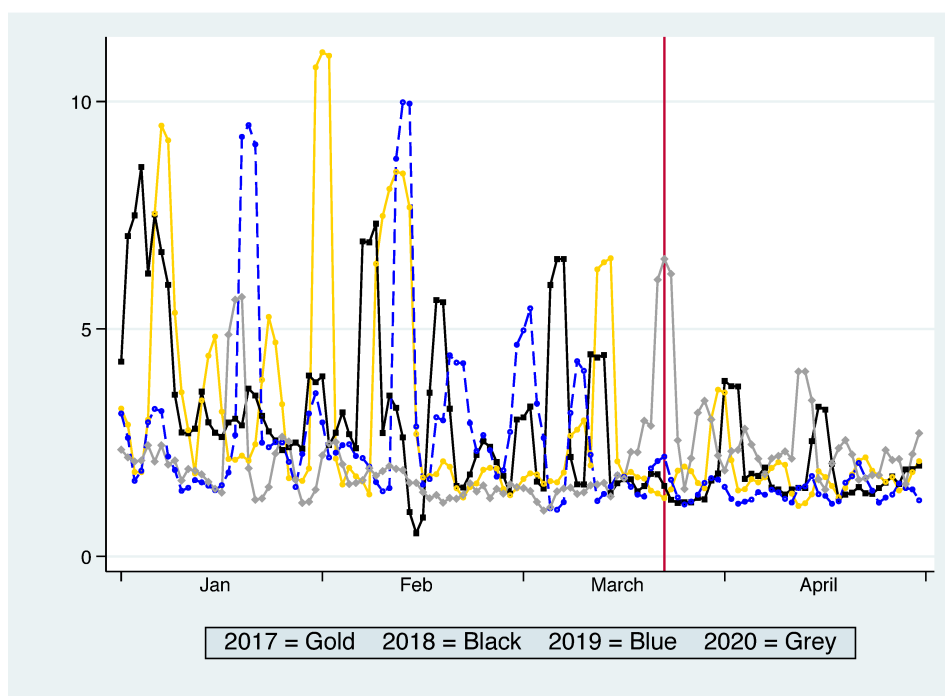
*Three-day Moving Average

Figure S7, Daily Rates of No Injury Crashes per 10 Million Vehicle Miles Traveled in Connecticut, 2020-2017



*Three-day Moving Average

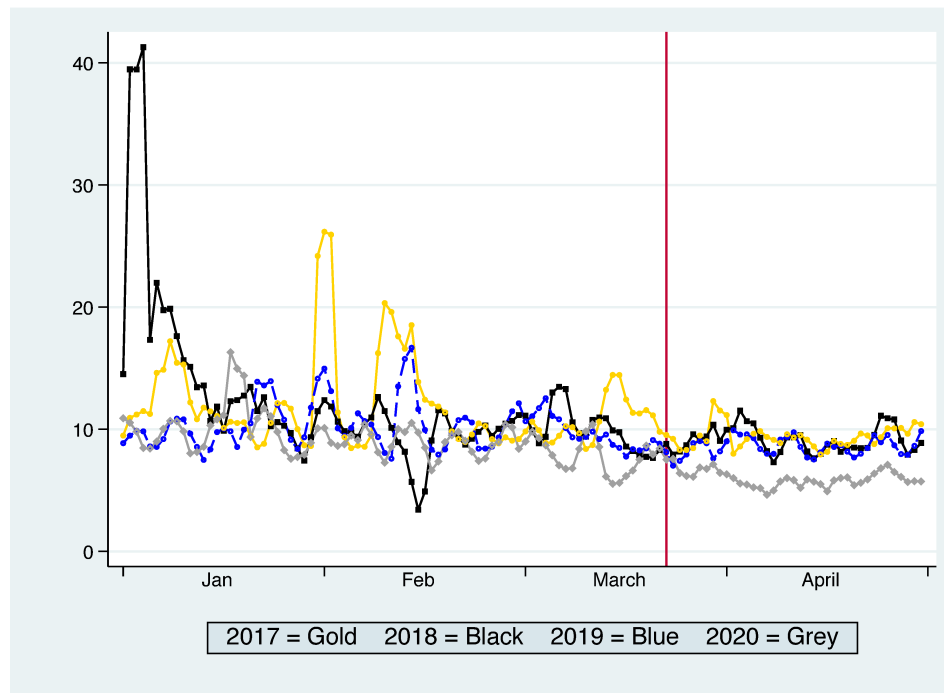
Figure S8, Daily Rates of No Injury Crashes, Single Vehicle per 10 Million Vehicle Miles Traveled in Connecticut, 2020-2017



*Three-day Moving Average

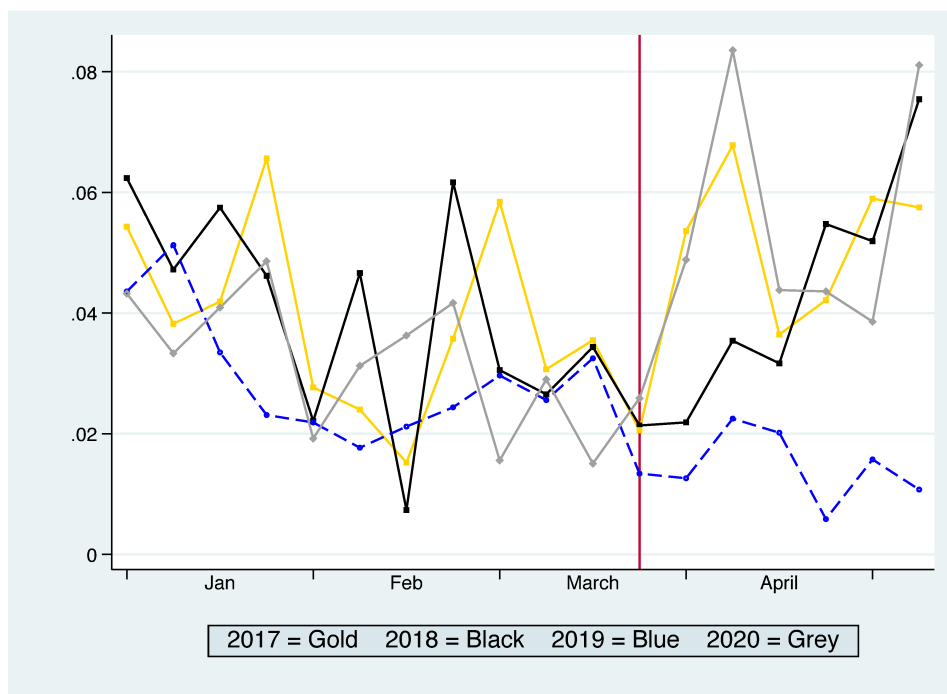
Figure S9, Daily Rates of No Injury Crashes, Multiple Vehicle per 10 Million Vehicle

Miles Traveled in Connecticut, 2020-2017



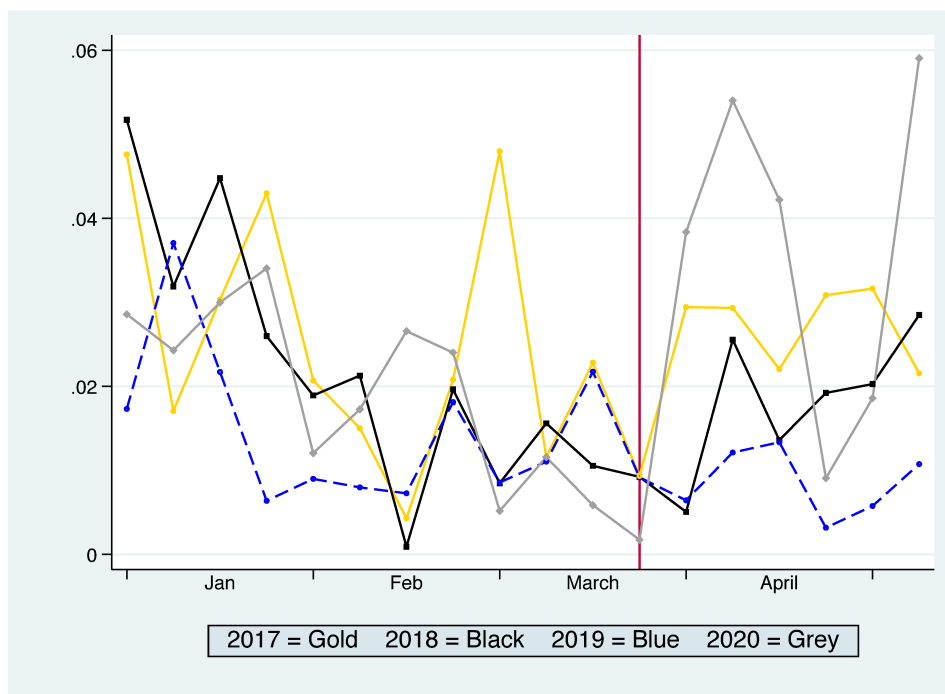
*Three-day Moving Average

Figure S10, Weekly Rates of Fatal Crashes per 10 Million Vehicle Miles Traveled in Connecticut, 2020-2017



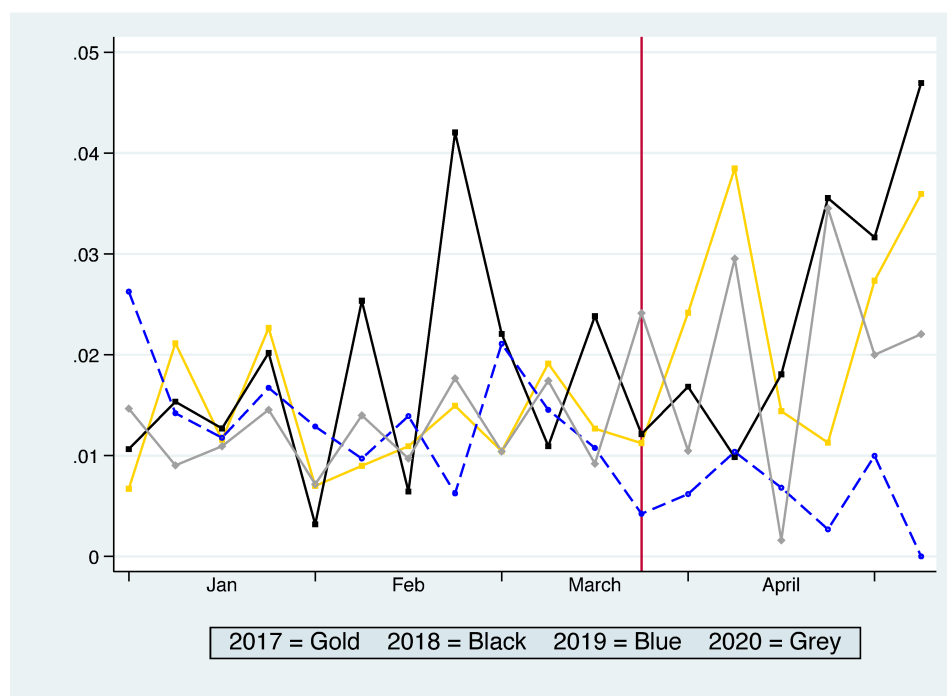
*Seven-day Moving Average

Figure S11, Weekly Rates of Fatal, Single Vehicle Crashes per 10 Million Vehicle Miles Traveled in Connecticut, 2020-2017



*Seven-day Moving Average

Figure S12, Weekly Rates of Fatal, Multiple Vehicle Crashes per 10 Million Vehicle Miles Traveled in Connecticut, 2020-2017



*Seven-day Moving Average