

**Supplementary Table 1.** The EAPCs in age-standardised incidence and DALYs rates among male and female from 1990 to 2019

Location	Age-standardised incidence rate	Age-standardised DALYs rate
Male	0.37%, 95% CI:0.32% - 0.42%*	-1.62%, 95% CI:-1.73% - -1.51%
Female	0.04%, 95% CI:-0.02% - 0.10%	-1.15%, 95% CI:-1.23% - -1.07%

\*represents statistical significance

**Supplementary Table 2.** The EAPCs in age-standardised incidence and DALYs rates among SDI levels from 1990 to 2019

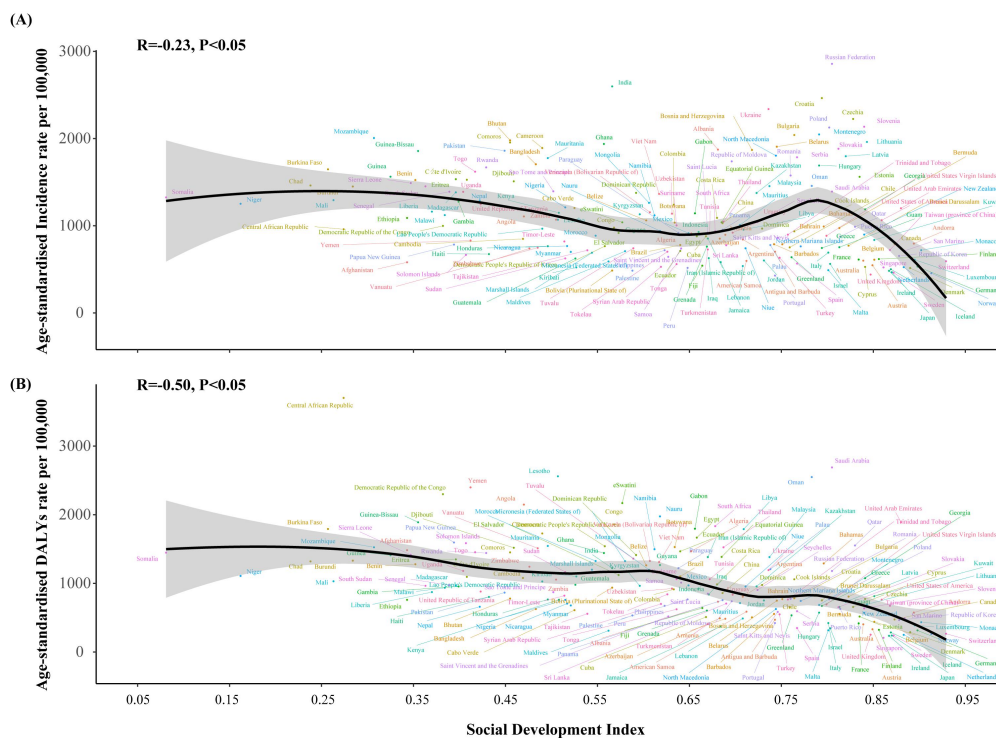
Location	Age-standardised incidence rate	Age-standardised DALYs rate
High SDI	-1.03%, 95% CI:-1.13% - -0.93%*	-2.11%, 95% CI:-2.3% - -1.92%*
High-middle SDI	-0.39%, 95% CI:-0.45% - -0.32%*	-1.74%, 95% CI:-2.08% - -1.39%*
Middle SDI	0.72%, 95% CI:0.57% - 0.87%*	-1.46%, 95% CI:-1.57% - -1.36%*
Low-middle SDI	0.66%, 95% CI:0.59% - 0.72%*	-0.68%, 95% CI:-0.8% - -0.55%*
Low SDI	0.21%, 95% CI:0.17% - 0.26%*	-0.87%, 95% CI:-0.96% - -0.77%*

\*represents statistical significance

**Supplementary Table 3.** The EAPCs in age-standardised incidence and DALYs rates among four age groups from 1990 to 2019

Measure	Location	0-14 years	15-49 years	50-69 years	70+ years
age-stand ardised incidence rate	Global	-0.45%, 95% CI:-0.51% - -0.39%*	0.37%, 95% CI:0.29% - 0.45%*	0.4%, 95% CI:0.36% - 0.44%*	0.22%, 95% CI:0.17% - 0.28%*
	High SDI	-1.65%, 95% CI:-1.84% - -1.45%*	-0.98%, 95% CI:-1.05% - -0.91%*	-0.6%, 95% CI:-0.64% - -0.56%*	-0.87%, 95% CI:-0.93% - -0.81%*
	High middle SDI	-0.78%, 95% CI:-0.84% - -0.71%*	-0.32%, 95% CI:-0.38% - -0.27%*	-0.43%, 95% CI:-0.56% - -0.29%*	-0.35%, 95% CI:-0.45% - -0.25%*
	Middle SDI	-0.38%, 95% CI:-0.66% - -0.09%*	0.88%, 95% CI:0.67% - 1.1%*	1.14%, 95% CI:1.09% - 1.2%*	1.05%, 95% CI:1% - 1.1%*
	Low middle SDI	-0.03%, 95% CI:-0.12% - 0.06%	0.75%, 95% CI:0.67% - 0.83%*	0.86%, 95% CI:0.83% - 0.89%*	0.67%, 95% CI:0.61% - 0.72%*
	Low SDI	-0.28%, 95% CI:-0.38% - -0.18%*	0.22%, 95% CI:0.18% - 0.27%*	0.41%, 95% CI:0.33% - 0.49%*	0.32%, 95% CI:0.27% - 0.36%*
	Global	-3.18%, 95% CI:-3.31% - -3.06%*	-1.02%, 95% CI:-1.14% - -0.9%*	-0.64%, 95% CI:-0.76% - -0.51%*	-0.43%, 95% CI:-0.51% - -0.35%*
	High SDI	-4.26%, 95% CI:-4.39% - -4.13%*	-1.95%, 95% CI:-2.11% - -1.79%*	-1.35%, 95% CI:-1.47% - -1.24%*	-1.46%, 95% CI:-1.54% - -1.38%*
	High middle SDI	-3.71%, 95% CI:-4.01% - -3.42%*	-1.56%, 95% CI:-1.95% - -1.16%*	-1.29%, 95% CI:-1.51% - -1.06%*	-0.96%, 95% CI:-1.1% - -0.83%*
	Middle SDI	-4.19%, 95% CI:-4.34% - -4.05%*	-1.04%, 95% CI:-1.21% - -0.87%*	-0.57%, 95% CI:-0.71% - -0.42%*	-0.12%, 95% CI:-0.22% - -0.02%*
DALYs rate	Low middle SDI	-2.88%, 95% CI:-3.17% - -2.58%*	-0.45%, 95% CI:-0.6% - -0.3%*	-0.09%, 95% CI:-0.29% - 0.1%	0.14%, 95% CI:-0.09% - 0.37%
	Low SDI	-2.65%, 95% CI:-2.76% - -2.55%*	-0.53%, 95% CI:-0.7% - -0.35%*	-0.43%, 95% CI:-0.58% - -0.27%*	-0.16%, 95% CI:-0.23% - -0.09%*

\*represents statistical significance



**Supplementary Figure 1.** The relationships between age-standardised incidence and age-standardised DALYs rates and SDI scores across 204 countries and territories. (A) age-standardised incidence rate. (B) age-standardised DALYs rates.