

### Supplementary File 5: Joinpoint Regression Output

See the Joinpoint Help Manual 4.9.1.0 for full description of model output. Available from:

[https://surveillance.cancer.gov/joinpoint/Joinpoint\\_Help\\_4.9.1.0.pdf](https://surveillance.cancer.gov/joinpoint/Joinpoint_Help_4.9.1.0.pdf)

#### Annual Percent Change

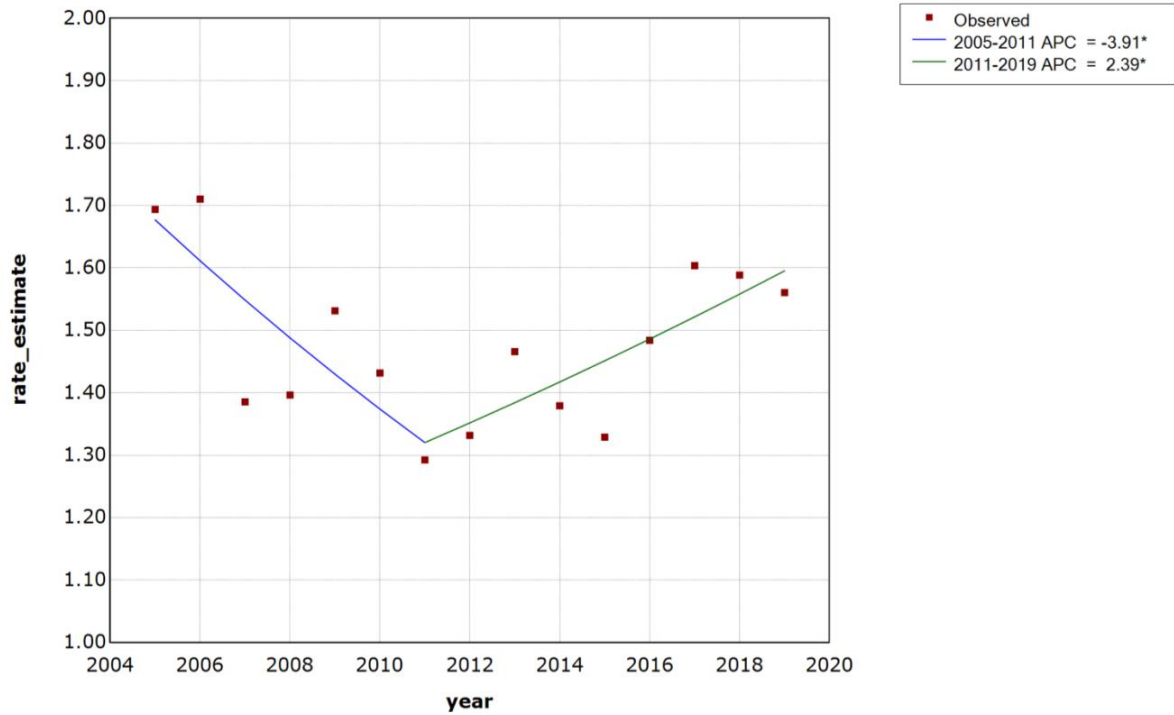
Rate Type	Segment	Segment Start	Segment End	Annual Percent Change (APC) Point Estimate	APC 95% Confidence Interval	Test Statistic	P-Value
All Intents	0	2005	2011	-3.9	-7 - -0.7	-2.7	0.023
	1	2011	2019	2.4	0.2 - 4.6	2.4	0.035
Unintentional	0	2005	2011	-4.3	-7.4 - -1.1	-3	0.013
	1	2011	2019	1.9	-0.3 - 4.2	1.9	0.08
Intentional	0	2005	2007	-18.6	-34.3 - 0.8	-2.1	0.058
	1	2007	2019	5	3.7 - 6.3	8.6	<0.001
Undetermined	0	2005	2019	-0.4	-3.4 - 2.7	-0.3	0.771

#### Output Data

Rate Type	Year	Rate Estimate	Model Estimate	Standard Error	Flag	Joinpoints	Final Selected Model
All Intents	2005	1.69	1.68	0.07	NA	1	1
	2006	1.71	1.61	0.07	NA	1	1
	2007	1.39	1.55	0.06	NA	1	1
	2008	1.4	1.49	0.06	NA	1	1
	2009	1.53	1.43	0.06	NA	1	1
	2010	1.43	1.37	0.06	NA	1	1
	2011	1.29	1.32	0.06	Joinpoint 1	1	1
	2012	1.33	1.35	0.06	NA	1	1
	2013	1.47	1.38	0.06	NA	1	1
	2014	1.38	1.42	0.06	NA	1	1
	2015	1.33	1.45	0.06	NA	1	1
	2016	1.48	1.49	0.06	NA	1	1
	2017	1.6	1.52	0.06	NA	1	1
	2018	1.59	1.56	0.06	NA	1	1
2019	1.56	1.6	0.06	NA	1	1	
Unintentional	2005	1.43	1.43	0.06	NA	1	1
	2006	1.42	1.37	0.06	NA	1	1
	2007	1.2	1.31	0.06	NA	1	1
	2008	1.19	1.25	0.06	NA	1	1
	2009	1.31	1.2	0.06	NA	1	1
	2010	1.2	1.15	0.06	NA	1	1
	2011	1.06	1.1	0.05	Joinpoint 1	1	1

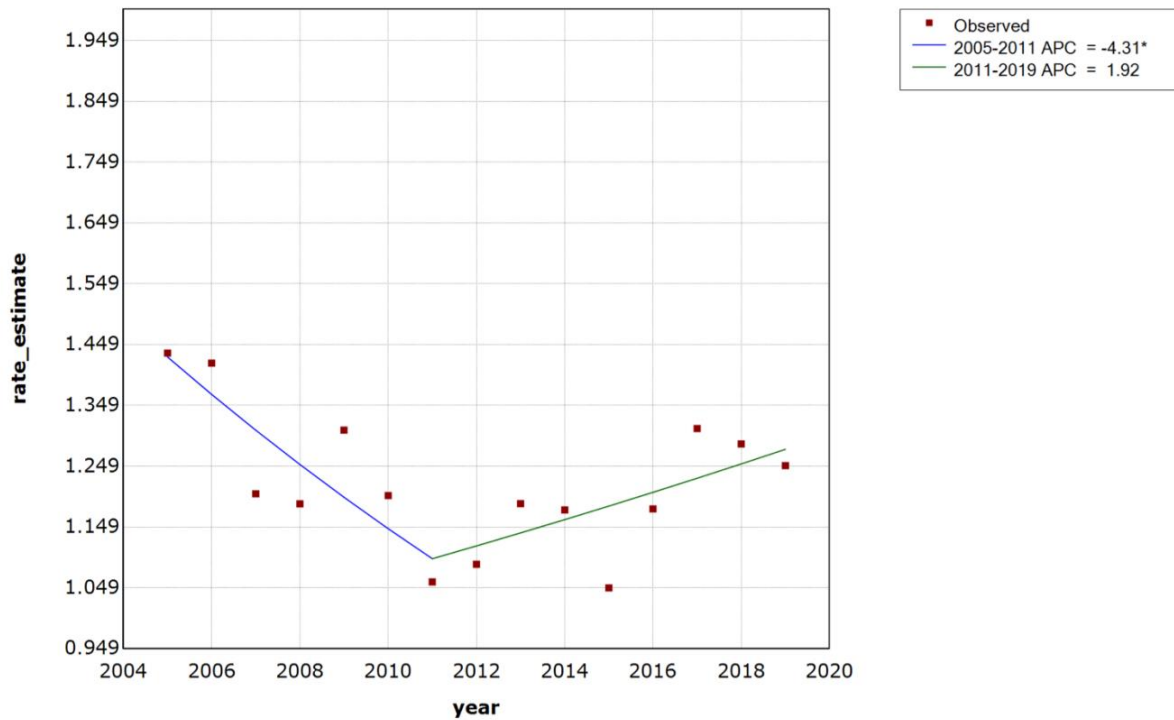
	2012	1.09	1.12	0.05	NA	1	1
	2013	1.19	1.14	0.06	NA	1	1
	2014	1.18	1.16	0.06	NA	1	1
	2015	1.05	1.18	0.05	NA	1	1
	2016	1.18	1.21	0.05	NA	1	1
	2017	1.31	1.23	0.06	NA	1	1
	2018	1.29	1.25	0.06	NA	1	1
	2019	1.25	1.28	0.06	NA	1	1
Intentional	2005	0.19	0.2	0.02	NA	1	1
	2006	0.19	0.17	0.02	NA	1	1
	2007	0.13	0.14	0.02	Joinpoint 1	1	1
	2008	0.14	0.14	0.02	NA	1	1
	2009	0.15	0.15	0.02	NA	1	1
	2010	0.17	0.16	0.02	NA	1	1
	2011	0.14	0.16	0.02	NA	1	1
	2012	0.16	0.17	0.02	NA	1	1
	2013	0.18	0.18	0.02	NA	1	1
	2014	0.17	0.19	0.02	NA	1	1
	2015	0.21	0.2	0.02	NA	1	1
	2016	0.22	0.21	0.02	NA	1	1
	2017	0.22	0.22	0.02	NA	1	1
	2018	0.23	0.23	0.02	NA	1	1
	2019	0.25	0.24	0.03	NA	1	1
Undetermined	2005	0.07	0.08	0.01	NA	0	0
	2006	0.1	0.08	0.02	NA	0	0
	2007	0.05	0.08	0.01	NA	0	0
	2008	0.07	0.08	0.01	NA	0	0
	2009	0.07	0.08	0.01	NA	0	0
	2010	0.06	0.07	0.01	NA	0	0
	2011	0.09	0.07	0.02	NA	0	0
	2012	0.08	0.07	0.01	NA	0	0
	2013	0.1	0.07	0.02	NA	0	0
	2014	0.04	0.07	0.01	NA	0	0
	2015	0.07	0.07	0.01	NA	0	0
	2016	0.08	0.07	0.01	NA	0	0
	2017	0.07	0.07	0.01	NA	0	0
	2018	0.07	0.07	0.01	NA	0	0
	2019	0.06	0.07	0.01	NA	0	0

### All Intents



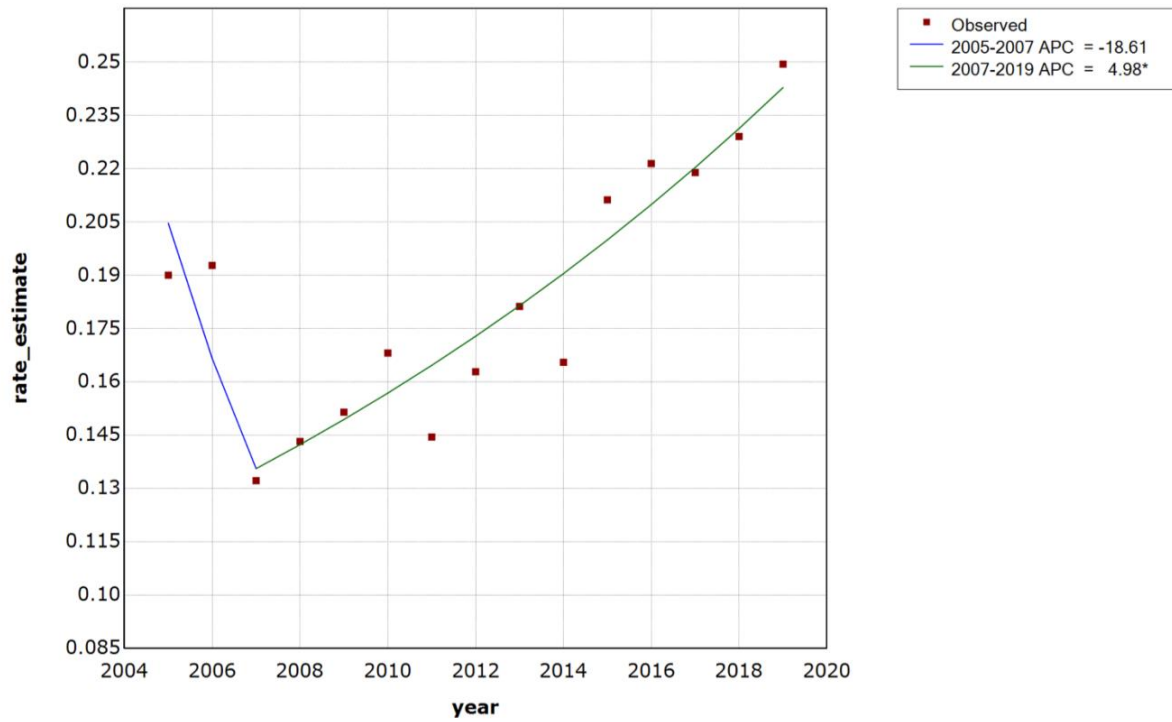
\* Indicates that the Annual Percent Change (APC) is significantly different from zero at the alpha = 0.05 level  
Final Selected Model: 1 Joinpoint.

### Unintentional



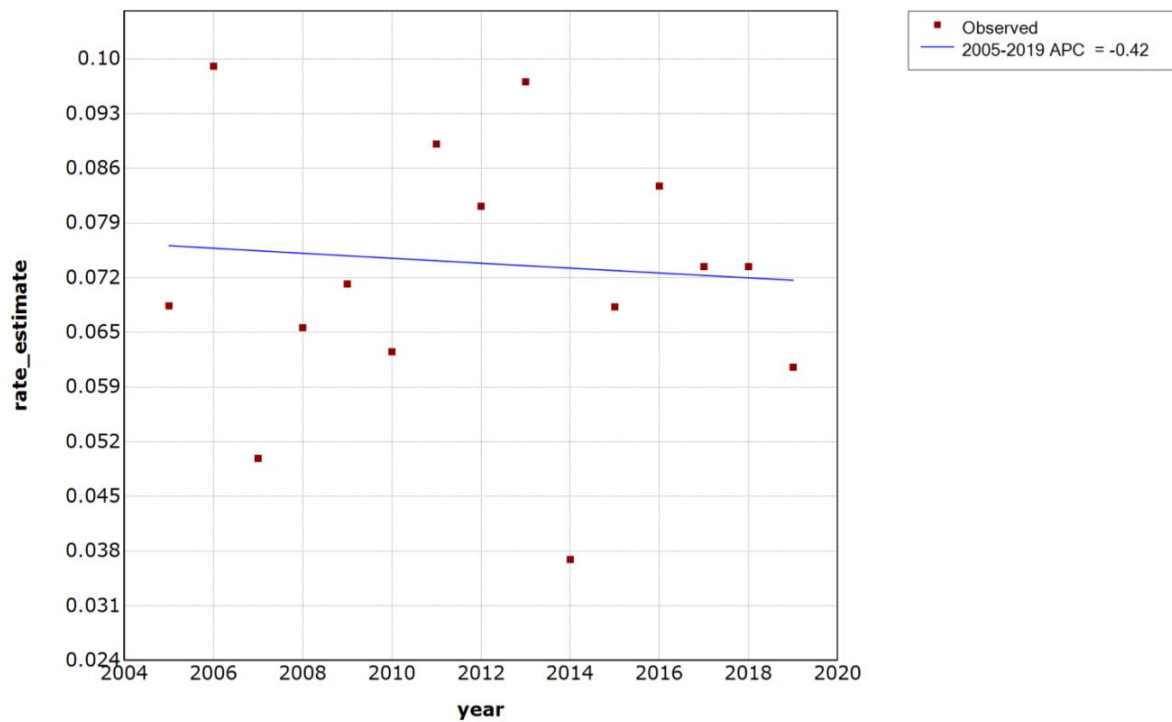
\* Indicates that the Annual Percent Change (APC) is significantly different from zero at the alpha = 0.05 level  
Final Selected Model: 1 Joinpoint.

**Intentional**



\* Indicates that the Annual Percent Change (APC) is significantly different from zero at the alpha = 0.05 level  
Final Selected Model: 1 Joinpoint.

**Undetermined**



\* Indicates that the Annual Percent Change (APC) is significantly different from zero at the alpha = 0.05 level  
Final Selected Model: 0 Joinpoints.